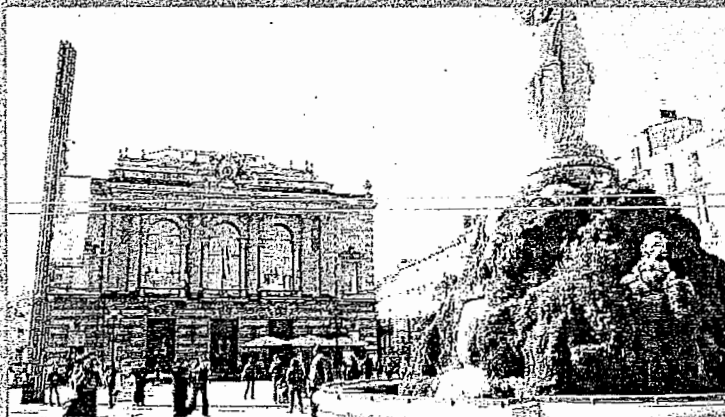
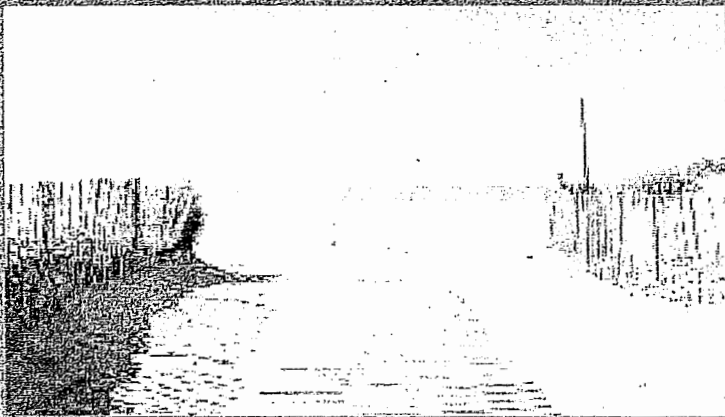


**EXCHANGE :
STUDIES OR INTERNSHIP**

Montpellier SupAgro



**B.Sc. to PhD Level Higher Education
Research
International Cooperation**



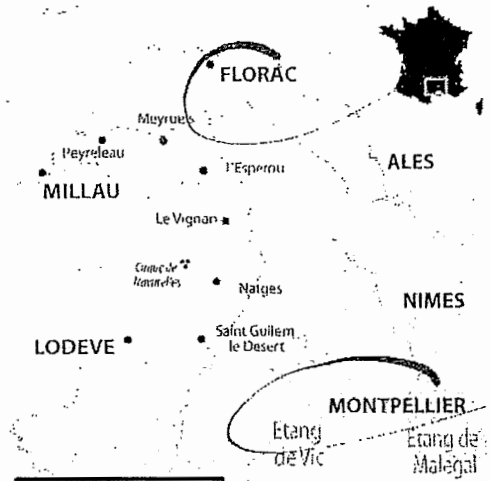
in

Agricultural Sciences
Biological Sciences
Agri-Food Science
Environment
Rural Management

	Sept	Oct	Nov	Dec	Jan	Feb	Mar	Apr	May	Jun	Jul	Aug
Autumn semester courses from September to January or March, according to the track												
Spring semester courses from February to April or May, according to the track												
Junior Research Lab												
Internship can start at any time of the year, must last less than 6 months												

French or English according to the selected courses. For more information, see course offers attached.

Most of the courses take place on the campus of La Gaillarde or La Valette in the city of Montpellier, few on the campus of the city of Florac and 3 of them take place, according to the periods, in different cities of France.



Exchange students can validate all or part of these credits. The number of ECTS credits for each course is indicated on the Course Offers documents and on the application forms.

		ECTS	hours	Jul	Aug	Sept	Oct	Nov	Dec	Jan	Feb	Mar	Apr	May	Jun
Elective French Summer Courses	paying														
French Intensive Courses	free of charge	1 ECTS each semester	3 hours /day												
French weekly Courses	free of charge	Autumn 2 ECTS Spring 1 ECTS	2 hours /week												
English, German, Spanish	free of charge	Autumn 2 ECTS Spring 1 ECTS	1,5 hours /week												

* Elective French Summer Courses - Please note! Fees are due.

We offer a French Summer Programs in July and/or August:

- Language & Culture Summer Course
www.supagro.fr/web/en/pages/?idl=19&page=1825 (English)
www.montpellier-supagro.fr/international/venir-etudier-montpellier-supagro/langues/campus-dete/langue-culture (French)

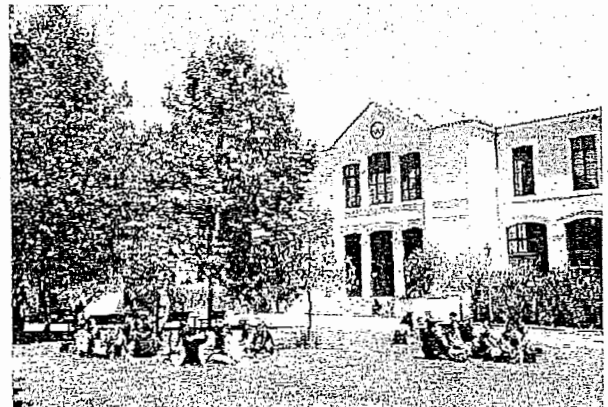
* French Language Courses – Free of charge

Intensive French language courses, 2 weeks before the beginning of each semester, are followed by regular courses, the whole semester or year.

- www.supagro.fr/web/en/pages/?idl=19&page=1402 (English)
- www.montpellier-supagro.fr/international/venir-etudier-montpellier-supagro/langues/francais-langue-etrangere-file (French)

* Other Language Courses

Students can also choose to attend free of charge English, Spanish or German courses, subject to available places.



Track Offers for incoming international mobility

AUTUMN SEMESTER

Ctrl-Click on the link in the Track you want to get more information

Sept	Oct	Nov	Déc	Jan	Fév	Mars	Avr	Mai	Juin	Juil	Août	Sept
------	-----	-----	-----	-----	-----	------	-----	-----	------	------	------	------

DOMINANTE 1 - Towards Sustainable Agriculture
Montpellier - 30 ECTS

DOMINANTE 2 - Products, Processes and Companies
Montpellier - 30 ECTS

DOMINANTE 3 - Sustainable Management of Natural Resources
Montpellier - 30 ECTS

EAU et AGRICULTURE 1 - Water and Agriculture (cycle and management of water in agrosystems)
Montpellier - 30 ECTS

EAU et AGRICULTURE 2 - Water and Agriculture (advanced methods for water management in agrosystems)
Montpellier - 30 ECTS

EAU et SOCIETE 1 - Water and Society (economy-sociology-management)
Montpellier - 30 ECTS

EAU et SOCIETE 2 - Water and Society (political science, law, history, geography)
Montpellier - 30 ECTS

EAU, SOL, ENVIRONNEMENT - Water, Cultivated Areas and Environment Management
Montpellier - 30 ECTS

DATA SCIENCE - Data science for Agronomy and Agri-Food
Rennes/Montpellier - 30 ECTS

AGROTIC - Agro-Technologies of Information and Communication
Montpellier/Bordeaux - 30 ECTS

CHIMIE VERTE - Chemistry and Bio-Processes for Sustainable Development
Montpellier - 30 ECTS

APIMET - Plant Breeding, Mediterranean and Tropical Crops Engineering
Montpellier - 30 ECTS

PPE - Plant Protection and Environment
Montpellier/Rennes/Paris - 30 ECTS

SYSTEME D'ELEVAGE - Livestock Farming Systems
Montpellier - 30 ECTS

PVD - Sustainable Crop Production
Montpellier - 30 ECTS

AGRO-MANAGERS - Agromanager
Montpellier - 30 ECTS

TERPPA - Territories and Resources: Public Policies and Actors
Montpellier - 30 ECTS

ECODEVA - Economics of agricultural development, environment and food
Montpellier - 30 ECTS

SPACE - Science and Processes of Agrosources for Food & Environment
Montpellier - 30 ECTS

AAIM - Agri-Food and Agro-Industry
Montpellier - 30 ECTS

IAAS - Agri-Food Industry in the South
Montpellier - 30 ECTS

MOQUAS - Markets, Organization, Food Quality, Services in the Southern Agriculture
Montpellier - 30 ECTS

RESAD - Resources and Agricultural Systems Development
Montpellier - 30 ECTS

Track Offers for incoming international mobility

SPRING SEMESTER

Ctrl-Click on the link in the Track you want to get more information

Sept	Oct	Nov	Déc	Jan	Fév	Mars	Avr	Mai	Juin	Juil	Août	Sept
------	-----	-----	-----	-----	-----	------	-----	-----	------	------	------	------

AGROECOLOGY - Agroecology ** Montpellier - 21 ECTS	Internship 7 ECTS
---	----------------------

AGROECOLOGY - Agroecology ** Montpellier - 21 ECTS	Junior Research Lab 7 ECTS
---	-------------------------------

PLANT SCIENCES - Plant Sciences ** Montpellier - 21 ECTS	Internship 7 ECTS
---	----------------------

PLANT SCIENCES - Plant Sciences ** Montpellier - 21 ECTS	Junior Research Lab 7 ECTS
---	-------------------------------

DATA MANAGER - Data Manager for environmental project ** Montpellier - 21 ECTS	Internship 7 ECTS
--	----------------------

DATA MANAGER - Data Manager for environmental project ** Montpellier - 21 ECTS	Junior Research Lab 7 ECTS
--	-------------------------------

Mixed Track (see next page)** Montpellier - 21 ECTS	Internship 7 ECTS
--	----------------------

Mixed Track (see next page)** Montpellier - 21 ECTS	Junior Research Lab 7 ECTS
--	-------------------------------

TED2 - Sustainable Development Policies and Strategies ** Montpellier - 21 ECTS	Internship 7 ECTS
---	----------------------

TED2 - Sustainable Development Policies and Strategies ** Montpellier - 21 ECTS	Junior Research Lab 7 ECTS
---	-------------------------------

AGROALIMENTAIRE - Agri-Food Montpellier - 21 ECTS	Internship 7 ECTS
--	----------------------

AGROALIMENTAIRE - Agri-Food Montpellier - 21 ECTS	Junior Research Lab 7 ECTS
--	-------------------------------

DAAS Development - Agricultural and Food Systems in Southern Countries Montpellier - 21 ECTS	Internship 7 ECTS
--	----------------------

DAAS Agrifood - Agricultural and Food Systems in Southern Countries Montpellier - 21 ECTS	Internship 7 ECTS
---	----------------------

EAU et AGRICULTURE 1 - Water and Agriculture (cycle and management of water in agrosystems) Montpellier - 22,5 ECTS	Internship 7,5 ECTS
---	------------------------

EAU et AGRICULTURE 1 - Water and Agriculture (cycle and management of water in agrosystems) Montpellier - 22,5 ECTS	Junior Research Lab 7 ECTS
---	-------------------------------

EAU et SOCIETE 1 - Water and Society (economy-sociology- management) Montpellier - 22,5 ECTS	Internship 7,5 ECTS
---	------------------------

EAU et SOCIETE 1 - Water and Society (economy-sociology- management) Montpellier - 22,5 ECTS	Junior Research Lab 7 ECTS
---	-------------------------------

MONTPELLIER SUPAGRO 2019-2020

Track Offers for Incoming International Mobility

FULL YEAR

Ctrl-Click on the link in the Track you want to get more information

Sept	Oct	Nov	Déc	Jan	Fév	Mars	Avr	Mai	Juin	Juil	Août	Sept
------	-----	-----	-----	-----	-----	------	-----	-----	------	------	------	------

COMBINE AUTUMN and SPRING SEMESTER TRACKS (see previous pages)

or

CHOOSE one of the following Tracks

CEEDDR - Coordination of Projects in Environmental Education and Sustainable Development - Florac - 40 ECTS	Internship 20 ECTS
GENA - Agricultural Management of Rural Natural Areas Florac - 40 ECTS	Internship 20 ECTS
EAU et AGRICULTURE 1 - Water and Agriculture (cycle and management of water in agrosystems) Montpellier - 52,5 ECTS	Internship 7,5 ECTS
EAU et AGRICULTURE 2 - Water and Agriculture (advanced methods for water management in agrosystems) Montpellier - 35 ECTS	Internship 25 ECTS
EAU et SOCIETE 1 - Water and Society (year 1 - economy-sociology-management) Montpellier - 52,5 ECTS	Internship 7,5 ECTS
EAU, SOL, ENVIRONNEMENT - Water, Cultivated Areas and Environment Management Montpellier - 30 ECTS	Internship 30 ECTS
DATA SCIENCE - Data science for Agronomy and Agri-Food Rennes/Montpellier - 30 ECTS	Internship 30 ECTS
AGROTIC - Agro-Technologies of Information and Communication Montpellier/Bordeaux - 30 ECTS	Internship 30 ECTS
CHIMIE VERTE - Chemistry and Bio-Processes for Sustainable Development Montpellier - 30 ECTS	Internship 30 ECTS
APIMET - Plant Breeding, Mediterranean and Tropical Crops Engineering Montpellier - 30 ECTS	Internship 30 ECTS
PPE - Plant Protection and Environment Montpellier/Rennes/Paris - 30 ECTS	Internship 30 ECTS
SYSTEME D'ELEVAGE - Livestock Farming Systems Montpellier - 30 ECTS	Internship 30 ECTS
PVD - Sustainable Crop Production Montpellier - 30 ECTS	Internship 30 ECTS
AGRO-MANAGERS - Agromanagers Montpellier - 30 ECTS	Internship 30 ECTS
TERPPA - Territories and Resources: Public Policies and Actors Montpellier - 30 ECTS	Internship 30 ECTS
ECODEVA - Economics of agricultural development, environment and food Montpellier - 30 ECTS	Internship 30 ECTS
SPACE - Science and Processes of Agresources for Food & Environment Montpellier - 30 ECTS	Internship 30 ECTS
AAIM - Agri-Food and Agro-Industry Montpellier - 30 ECTS	Internship 30 ECTS
IAAS - Agri-Food Industry in the South Montpellier - 30 ECTS	Internship 30 ECTS
MOQUAS - Markets, Organization, Food Quality, Services in the Southern Agriculture Montpellier - 30 ECTS	Internship 30 ECTS
RESAD - Resources and Agricultural Systems Development Montpellier - 30 ECTS	Internship 30 ECTS

 French

MONTPELLIER SUPAGRO 2019-2020:

JUNIOR RESEARCH LAB - JRL

- From May to July the JRL will function as a real research unit.
- The module is based on a research project but is not an internship under the supervision of a senior scientist having already framed the entire project. It is a learning by research and doing module.
- Small groups of 3-4 international students will be assembled on the basis of their complementary skills and they will have to identify a scientific question on which they will focus (plant biology, genetics and evolution, soil and water science, numeric agriculture for the 2019 session), learn by reading up-to-date scientific literature, design experiments, acquire and analyze data and write a scientific paper.
- During the JRL period, the students will be taught to assemble and read critically a corpus of scientific papers, develop their own curiosity and creativity while being challenged by the supervising team for their scientific rigor and consistency.
- Each student will be supervised by an academic from the JRL team or by a scientist from one of the associated research teams. Students will be connected to one of the 74 Units of research of the Agropolis community, a worldwide acknowledged research hub with more than 2,500 full time scientists in agronomical, biological and ecology science (link).
- All students attending The Junior Research Lab module will be hosted in the same convivial open space offices to permit exchanges, cross discussions and emulation, and the realization of some of their experiments.
- Scientific seminar will be given by senior scientists every week and regular reporting will be organized. The module will be evaluated on an ongoing basis.
- The final grade will consist of a continuous review and a final examination (scientific paper and oral talk). The JRL is a credited module (7 ECTS) and will be valued for the academics records.

MONTPELLIER SUPAGRO 2019-2020:

INTERNSHIP

- International students can apply for a research internship in one of the 22 Montpellier SupAgro Joint Research Unit (UMR).
 - Students must personally take steps to find the internship. For that, they should consult the list of the UMR, at the end of this document and/or consult the UMR websites <https://www.supagro.fr/web/en/pages/?idl=19&page=1389> (English) <https://www.montpellier-supagro.fr/recherche/dispositifs-de-recherche> (French)
 - Students should send a message to the contact persons of the chosen UMRs of interest, and indicate the period they are interested in and the topics they would like to work on.
 - The application may be accepted if the project is compatible with the work in progress and the availability of the targeted research teams.
- Internship can begin at any time of the year.
- Internship may last from 2 to 6 months. Internships of more than two months are remunerated but more difficult to obtain.
- Proficiency is required in French or in English. In some cases, other languages can be accepted.

MPRS Department - Soils, Water, Crops and Livestock Systems Department

UMR Eco&Sols - Functional Ecology & Biogeochemistry of Soils

The aim of the Eco&Sols joint research unit is to use ecological engineering to propose scientifically-based practices to maintain and improve the agricultural and environmental functions of agro-ecosystems. The research undertaken by Eco&Sols seeks to describe and understand the ecological processes of primary production and the regulation of the carbon and nutrient fluxes in the agro-systems.

Website: <http://www.umr-ecosols.fr/en/>

Members: Inra, Cirad, IRD, Montpellier SupAgro

Contact: claire.marsden@supagro.fr

UMR LISAH - Laboratory for the Study of Interactions between Soil, Agro-Ecosystems and Water Systems

The LISAH joint research unit focuses its work on hydrology, the transfer of contaminants and erosion of highly developed and cultivated soils. It also studies the spatial properties of these areas, and their evolution. These studies aim at analyzing the issues of water and soils in cultivated areas.

Website: <https://www.umr-lisah.fr/?q=en>

Members: Inra, IRD, Montpellier SupAgro

Contact: stephane.follain@supagro.fr - francois.colin@supagro.fr - armand.crabit@supagro.fr

UMR LSTM - Microbial and Mediterranean Ecosystems Laboratory

The LSTM joint research unit studies microbiology and biology of plants, based on a multidisciplinary and integrative approach. It aims at understanding the molecular mechanism influencing the establishing of symbioses, as well as their role in ecosystematic services. It also studies the biodiversity of symbiotic microorganisms.

Website: <https://umr-lstm.cirad.fr/>

Members: UM, Cirad, IRD, Montpellier SupAgro

Contact: brigitte.brunel@supagro.inra.fr

Recruitment: <http://umr-lstm.cirad.fr/offres-d-emploi-et-propositions-de-stages>

UMR SELMET - Grazed Systems in Pastoral Areas and Pastoral Systems

The SELMET joint research unit works on animal production agro-ecosystems in warm climates, in normal and harsh conditions. The extreme conditions under which some of these systems function challenge the limits of ecological intensification.

Website: <http://umr-selmet.cirad.fr/en>

Members: Inra, Cirad, Montpellier SupAgro

Contact: nathalie.agbagla@supagro.fr - charles-henri.moulin@supagro.inra.fr

UMR SYSTEM - Crop System Design and Mediterranean Cropping Systems Functioning and Evolution

The SYSTEM joint research unit produces knowledge and tools to assess and design cropping systems combining economic efficiency and the production of environmental services. In Mediterranean and tropical areas, it explores the hypothesis whereby the biological diversity of species cultivated in the same place fosters ecological intensification.

Website: <https://umr-system.cirad.fr/en>

Members: Cirad, Inra, Montpellier SupAgro, Ciheam-IAM

Contact: aurelie.metay@supagro.fr

SABP Department - Department of Sciences for Agro-Bio-Processes

UMR G-EAU - Water Management, Actors, Users

The G-EAU joint research unit conducts researches on hydrosystems, from physical description to integrated water management; it contributes to the design and evaluation of facilities to develop innovating solutions and policies for improved water management. The unit is strongly involved in 'Water and Agriculture' and 'Water and Society' master programmes.

Website: <http://www.g-eau.fr/index.php/en/>

Members: IRSTEA, Cirad, IRD, AgroParisTech, Montpellier SupAgro

Contact: gilles.belaud@supagro.fr

Recruitment: <http://www.g-eau.fr/index.php/en/jru-g-eau/recruitment>

UMR IATE - Agro-Polymer Engineering and Emerging Technologies

The IATE joint research unit generates knowledge regarding the structural-functional properties of plant-based products upon transformation to food, biomaterials, biomolecules and bioenergy.

Website: <https://umr-iate.cirad.fr/en>

Members: Inra, Cirad, UM, Montpellier SupAgro

Contact: maeva.subileau@supagro.inra.fr

SESG Department - Sciences Economiques, Sociales et de Gestion

UMR INNOVATION – Innovation and Development in Agriculture and Agri-Food Sector

The mission of the INNOVATION joint research unit is to inform private and public actors' decision-making by producing knowledge on the processes of innovation and development in agricultural and food systems. Its research focuses on innovation processes, ranging from understanding the objectives of the actors wanting to innovate to analyzing innovations' impact on development. Its research also covers the methods required to support the actors who innovate.

Site internet : <https://umr-innovation.cirad.fr/en>

Membres : Cirad, Inra, Montpellier SupAgro

Coordonné par : stephane.de-tourdonnet@supagro.inra.fr

UMR CEE-M – Centre de Recherches Economiques Montpellier

The CEE-M (ex-LAMETA) joint research unit aims at developing a plurality of works through specific tools (Market Econometrics, behavioral economics, experimental economics, public economics, history of economics thought, micro economy, social economy, game theory). The targeted areas are as follow: Risks, Preferences and behaviors; Public decision, collective actions and social ethic; Competition, regulations and network industry and finally Environment, natural resources and biodiversity.

Site internet : <http://www.cee-m.fr/>

Membres : Inra, CNRS, UM, Montpellier SupAgro

Coordonné par : pauline.lecole@supagro.fr

UMR MOISA – Analyse des Organisations, Institutions et Acteurs Méditerranéens

The MOISA joint research unit studies issues related to the strategies implemented by the different actors, private or public, individuals (consumers) or collectives (social groups of market or non-market production), to their internal mode of communication (enterprises) or external (vertically or horizontally), and to the functioning of institutions (markets, laws), which are applied to food science and rural agricultural systems in the Mediterranean and tropical areas.

Site internet : <http://umr-moisa.cirad.fr/>

Membres : Cirad, Inra, CIHEIAM-IAMM, Montpellier SupAgro

Coordonné par : lucie.sirieix@supagro.fr

Site internet : <http://umr-moisa.cirad.fr/offres-stages-theses-post-doc>

UMR GRED – Gouvernance, Risques, Environnements et Développement

Quatre axes structurent à présent l'USC GRED:

- Biodiversités et sociétés
- Gouvernance des ressources et des territoires - Pluralité des règles, des acteurs et des espaces de décision
- Risques, transports et vulnérabilités des territoires
- Modélisation et représentations spatiales pour l'aide à la décision en aménagement

De nouvelles actions transversales ont été identifiées, au niveau des thématiques (conflits et accès aux ressources, politiques publiques) et/ou des chantiers relatifs à des milieux spécifiques (forêts, milieux littoraux et insulaire), ou encore des pays ou région (Maghreb, Afrique de l'Ouest) qui permettent des collaborations et dynamiques trans-axes.

Site internet : <http://www.gred.ird.fr/>

Membres : IRD, UM3, Montpellier SupAgro

Coordonné par : pascale.maizi@supagro.fr - marie-jeanne.valony@supagro.fr

Nomination and Application Procedures

Requirements	Official evidence student have completed at least 4 semesters of graduate studies for the tracks given at Florac Campus (B.Sc. 3 level) and 6 semesters for the other tracks B1/B2 level in French and/or English, depending on the selected track
Nomination and Application	Nomination Online : Each partner receives an email with a link to create his account on Mobility Online. The nominations are done and can be modified on this account. Nominated students will receive an email with their login and password. Application form and documents must be completed/uploaded ONLINE : ID-photo, ID-document, Transcript of records of higher education, Language certificates in French and/or English (depending on courses), Cover letter and Learning agreement.
Deadlines for Application	Full year or Autumn semester: 15st April Spring semester: 15st October

Exchange related information

Accommodation, Meals and more	Résidence SupAgro: 50 Rue Croix de Las Cazes - 34000 Montpellier residence@supagro.fr - +33 4 99 61 22 89 Lunch at the campus restaurant under the same conditions as SupAgro students More information: English - https://www.supagro.fr/web/en/pages/?id=19&page=1360 French - https://www.montpellier-supagro.fr/international/venir-etudier-montpellier-supagro/mobilite-academique-stage/venir-en-echange
Insurance	Students who do not have an EHC (European Health Insurance Card) will have to take out French health insurance cover for the duration of their stay. An accident, personal and third party liability insurance is also compulsory (it can be taken along with the bank account at their arrival in France).
Visa	For non-European Students: English - https://www.supagro.fr/web/en/pages/?id=19&page=1421 French - https://www.montpellier-supagro.fr/international/venir-etudier-montpellier-supagro/votre-service/preparer-votre-arrivee-montpellier
Students with Special Needs	Montpellier SupAgro offers the infrastructure to welcome students and staff with disabilities: English - https://www.supagro.fr/web/en/pages/?id=19&page=2180 French - https://www.montpellier-supagro.fr/vie-etudiante/campus-dynamiques/accessibilite-et-handicap

Welcome events and Extra-Curricular Activities

Exchange students have the opportunity to participate to a wide range of sports and extra-curricular activities offered by Montpellier SupAgro and/or organized by [LE DÉPARTEMENT D'ÉTUDES INTERNATIONALES](#)

Webs: [LE DÉPARTEMENT D'ÉTUDES INTERNATIONALES](#)

English - <https://www.supagro.fr/web/en/pages/?id=19&page=1365>

French - <https://www.montpellier-supagro.fr/vie-etudiante/campus-dynamiques/vie-associative>

Student Guides

Mon guide, mon ami fidèle, a guide written by and for students!

<https://www.montpellier-supagro.fr/sites/supagro/files/documents/2018/07/10/Le%20guide%202018-2019%20Version%20finale.pdf>
(French)

The Practical Guide for International Students in Languedoc Roussillon